

# Insulated butt connectors KLI type to join "in contact"

## FEATURES & BENEFITS



-



-



-

## LOGISTIC DATA

Available packages 100

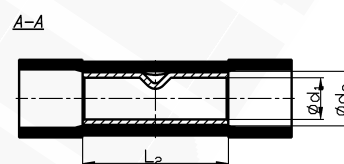
## MECHANICAL DATA

Insulated polyamide 6.6

Material Cu

Surface tin-plated

Working temperature [°C] -30 ÷ +95



Type	Index Ergom	Cross section [mm <sup>2</sup> ]	Insulation color	L <sub>1</sub>	L <sub>2</sub>	d <sub>1</sub>	d <sub>2</sub>	Weights [kg]
KLI 0,5 (100 SZT./PCS)	E09KO-02060100101	0,1+0,5	yellow	20	12	1,3	2,0	0.035
KLI 1 (100 SZT./PCS)	E09KO-02060100201	0,5+1,0	red	27,3	15	1,7	3,2	0.105
KLI 2,5 (100 SZT./PCS)	E09KO-02060100301	1,5+2,5	blue	27,3	15	2,3	3,8	0.14
KLI 6 (100 SZT./PCS)	E09KO-02060100401	4+6	yellow	27	15	3,4	5,3	0.225