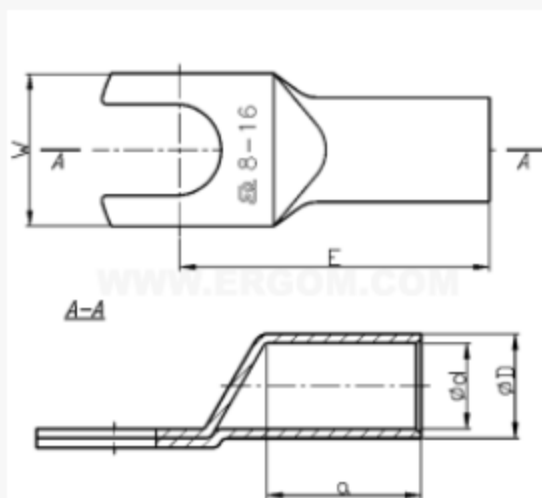


logistics detailsProduct title: **Tubular spade terminals KWR type**Type: **KWR 16/10 (100 SZT./PCS)**Weight netto: **~ 0,912 kg****Certificates**Design: **standard****crimping**Die code No. **9**No. of crimping wide **1**No. of crimping narrow **1****mechanical details**Material: **Cu**Surface: **tin-plated**Size of bolt dia: **M10****Sections**Cross section rm/sm [mm²]: **16****Sizes**

d	5,5
D	8,5
a	13
E	29,5
W	17,0