

logistics details

Product title:	Low-cost tubular terminals with inspection hole KREo type
Type:	KREo 25/8 (100 SZT./PCS)

Weight netto: ~ 0,744 kg

Certificates

Design **economic**

crimping

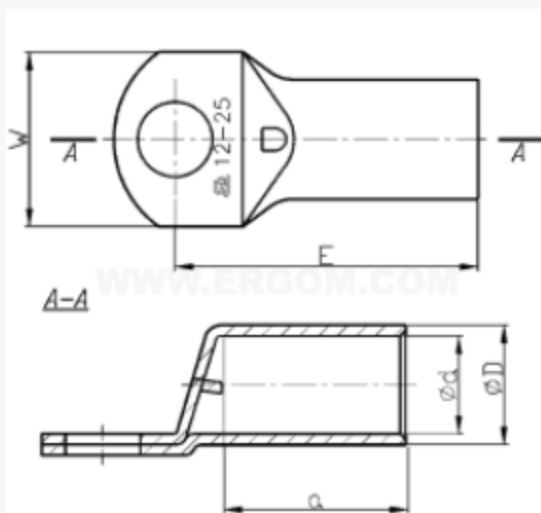
Die code No.	9
No. of crimping wide	1
No. of crimping narrow	2

mechanical details

Material	Cu
Surface	tin-plated
Size of bolt dia	M8

Sections

Cross section mm²/sm [mm²] **25**

**Sizes**

d	7,1
D	9,5
a	13,5
E	26,7
W	13,5